



Media Outgest

Outgest is a software application enabling simple transfer of media from disk to tape.

Once the media to be outgested has been selected, Aqua Outgest populates the video review window and keyframe display at the tape of the screen, if keyframes are available.

Any programme metadata is displayed on the Programme tab and audio track mapping information is shown on the Outgest Details tab. This tab also shows the tape outgest history for the selected media.

The review window can be resized or moved onto an adjacent monitor. The navigation controls are the familiar rewind, play, pause and fast forward controls, using variable speed and frame-stepping. You can also use a professional jog/shuttle control with this application or the same actions can be performed with customisable shortcut keys. Alternatively, you can drag the keyframes along the screen and then simply click on a keyframe to move this point in the media.

Aqua Outgest comes with an option to scan/or print barcodes for labelling the outgest tape. This barcode information is also stored as part of the tape outgest history, along with user ID and the date & time of the outgest. The timecode can also be reset at outgest. The timecode can also be reset at outgest to a user-defined start timecode of the media timecode can be retained.

Remote control of the VTR can be used both for recording and playback of the tape. During the recording tape a Progresso bar is displayed showing statistics and diagnostics information. Standard designs for reports are delivered as standard with Aqua Outgest. Customised reports and labels are available as an additional option.



Benefits

- Intuitive user interface
- Navigation with keyframes
- Outgest media tape history
- Review Mode
- Progress Statistics and diagnostics
- Remote control of VTR
- Replay on external monitor for verifying outgest
- Barcode scanning and printing



For more information, please contact the sales department

sales@suitcasetv.com



suitcase tv

Technical Data

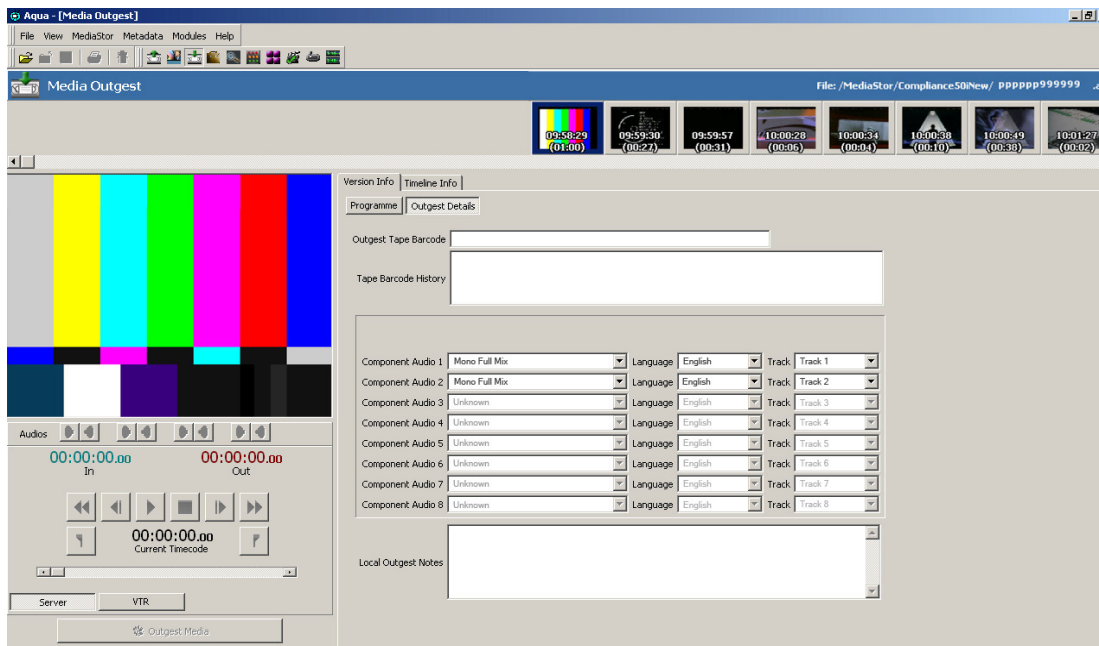
PRODUCT CODE: AQUA - OUTGEST

Inputs: 50i, 40i, 30i, Long GOP, DV, WMV, and H.264

Outputs: SDI (625) [HD-SDI and 525 soon to follow]

System Requirements

Operating System	Windows XP
Processor	Intel Core 2 Duo
Memory (min)	2 GB RAM
Hard Disk	N/A
Sound Card	Direct X compliant
Graphics Card	Nvidia GTX series
Video	24/32-bit colour
Control	Keyboard, Mouse, or jog/shuttle
Output Card	SDI Output requires an appropriate BlackMagic output card from the Decklink range.



build your own journey...